



# GMT MONTHLY MEMBERSHIP PROGRESS REPORT

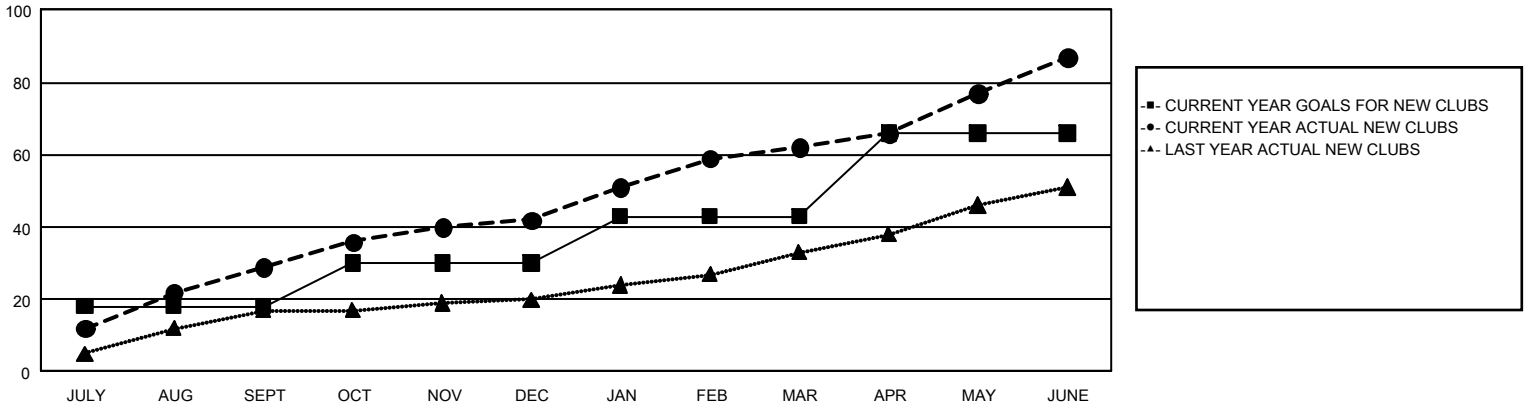
## GAT Constitutional Area 7

Results as of: 6/30/2024

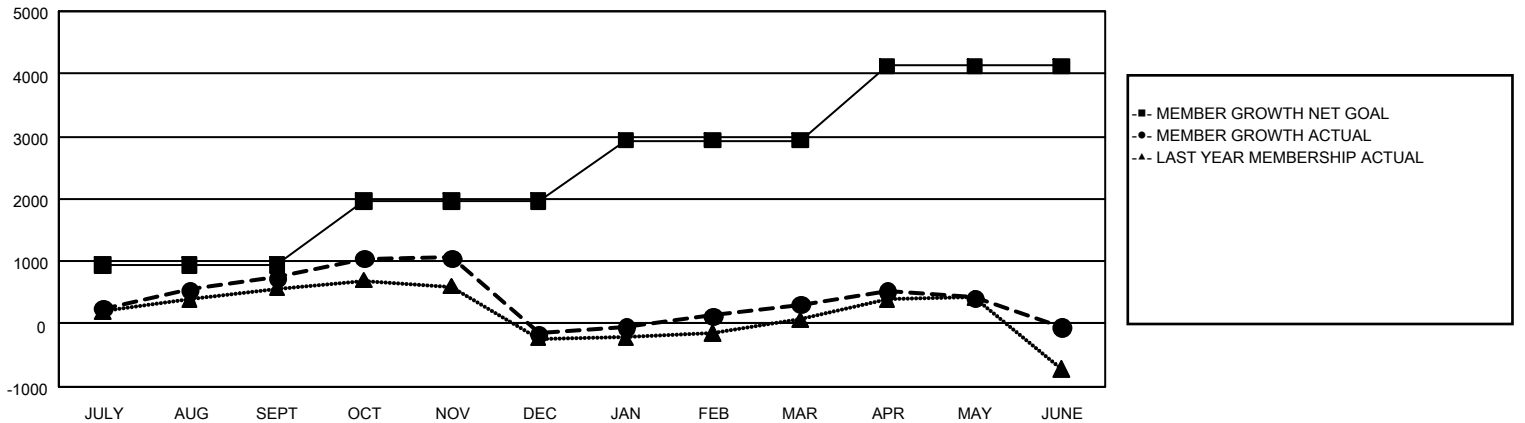
REPORT DOES NOT INCLUDE CLUBS IN UNDISTRICTED AREAS.

Clubs				Members			
RESULTS FOR 2023-2024				RESULTS FOR 2023-2024			
QUARTER	NEW CLUB GOAL	NEW CLUBS	DROPPED CLUBS	QUARTER	MEMBER GROWTH NET GOAL	MEMBER GROWTH ACTUAL	DROPPED MEMBERS ACTUAL (including transfers)
JULY/AUG/SEPT	18	29	21	JULY/AUG/SEPT	937	2,190	1,265
OCT/NOV/DEC	12	13	6	OCT/NOV/DEC	1,029	1,487	2,275
JAN/FEB/MAR	13	20	3	JAN/FEB/MAR	968	1,720	1,105
APR/MAY/JUNE	23	25	14	APR/MAY/JUNE	1,194	2,459	2,466

**GOALS AND ACTUAL NEW CLUBS CUMULATIVE**



**GOALS AND ACTUAL MEMBERS CUMULATIVE**



DROPPED CLUBS: 44	1,307 CLUBS OF 1,929 ADDED 1 OR MORE NEW MEMBERS	<b>GENDER DISTRIBUTION</b>
<b>DROPPED MEMBERS</b>		MALE                    23,996 (56.30%)
DECEASED                    491		FEMALE                    18,603 (43.64%)
CLUB CANCELLED                74	<a href="#">CLICK HERE FOR CUMULATIVE MEMBERSHIP DATA</a>	TOTAL FAMILY UNIT MEMBERS                    7,193
OTHER                            6,504		FAMILY MEMBERS PAYING HALF DUES                    3,883
<b>TOTAL                            7,069</b>		